

BXUV.S812 - FIRE-RESISTANCE RATINGS - ANSI/UL 263

Design/System/Construction/Assembly Usage Disclaimer

- Authorities Having Jurisdiction should be consulted in all cases as to the particular requirements covering the installation and use of UL Certified products, equipment, system, devices, and materials.
- Authorities Having Jurisdiction should be consulted before construction.
- Fire resistance assemblies and products are developed by the design submitter and have been investigated by UL for compliance with applicable requirements. The published information cannot always address every construction nuance encountered in the field.
- When field issues arise, it is recommended the first contact for assistance be the technical service staff provided by the product manufacturer noted for the design. Users of fire resistance assemblies are advised to consult the general Guide Information for each product category and each group of assemblies. The Guide Information includes specifics concerning alternate materials and alternate methods of construction.
- Only products which bear UL's Mark are considered Certified.

BXUV - Fire Resistance Ratings - ANSI/UL 263 Certified for United States

BXUV7 - Fire Resistance Ratings - CAN/ULC-S101 Certified for Canada

See General Information for Fire-resistance Ratings - ANSI/UL 263 Certified for United States Design Criteria and Allowable Variances

See General Information for Fire Resistance Ratings - CAN/ULC-S101 Certified for Canada Design Criteria and Allowable Variances

Design No. S812

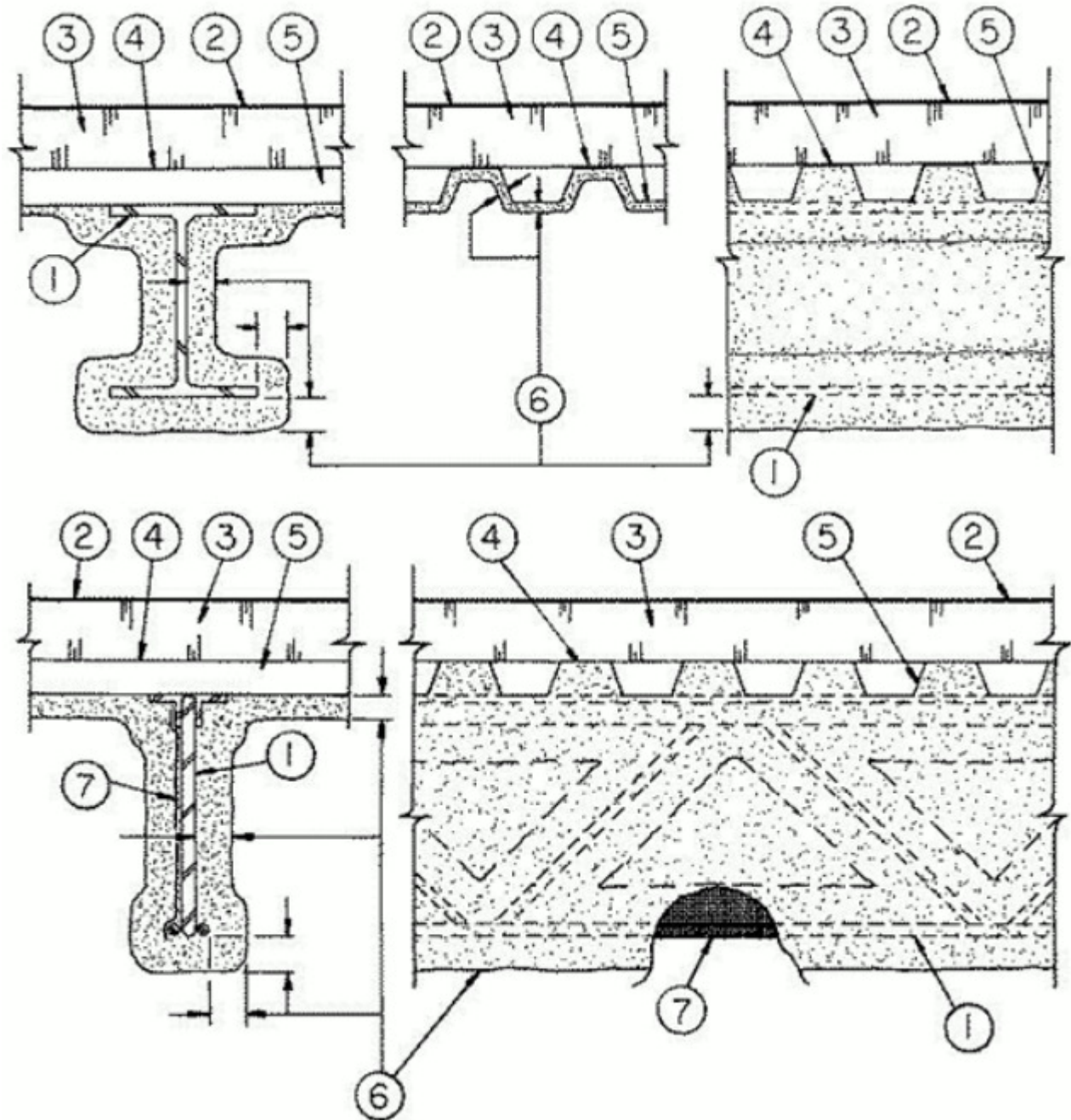
May 03, 2018

Restrained Beam Ratings — 1, 1-1/2, 2, 3 and 4 Hr. (See Item 6)

Unrestrained Beam Ratings — 1, 1-1/2, 2, 3 and 4 Hr. (See Item 6)

Loading Determined by Allowable Stress Design Method or Load and Resistance Factor Design Method published by the American Institute of Steel Construction, or in accordance with the relevant Limit State Design Provisions of Part 4 of the National Building Code of Canada.

*** Indicates such products shall bear the UL or cUL Certification Mark for jurisdictions employing the UL or cUL Certification (such as Canada), respectively.**



1. Steel Supports — Non-composite W6x16 min size steel beam or steel joist min 10K1 or min depth and weight shall be 10 in and 4.85 lb/ft respectively. May be uncoated or provided with a shop coat of paint. Designed per S.J.I. specifications for a max design yield stress of 50,000 psi (50 ksi). Top chords shall consist of two angles measuring minimum 1-1/4 by 1-1/4 by 0.129 in. thick. Bottom chords shall consist of two angles measuring minimum 1 by 1 by 0.109 in. thick. The first diagonal web member at each end shall consist of a minimum 0.625 in. dia. round bar. All remaining web members shall consist of minimum 0.50 in. dia. round bars. Bridging per S.J.I. specifications when non-composite joists are used.

2. Roof Covering* — Consisting of hot mopped, cold application or single-ply materials, compatible with insulations described herein which provide Class A, B or C coverings. See Roofing Materials and Systems Directory-Roof Covering Materials (TEVT).

3. Roof Insulation* — Consisting of Building units, foamed plastic or mineral and fiber boards, applied in one or more layers. When multiple layers are used, end and side joints shall be offset a min of 12 in. in both directions in order to lap all joints. See category for names of companies providing Classified products-Building Units (BZXX), Foamed Plastic (CCVW) or Mineral and Fiber Boards (CERZ). Roof insulation shall be compatible with roof covering materials Class A, B or C system. See Roofing Materials and Systems Directory-Roof Covering Materials (TEVT).

4. Adhesive — (Optional) — May be applied to steel roof deck units or between insulation layers at a max application rate of 0.4 gal per sq ft. See Adhesive (BYWR) category for names of manufacturers.

5. **Steel Roof Deck** — (Unclassified) — Fluted, No. 22 MSG min galv. 1-1/2 in. deep with 3-1/2 in. wide flutes spaced 6 in. OC. Ends overlapped a min 1-1/2 in. and welded to supports, 12 in. OC max. Adjacent units button-punched, welded or fastened with No. 12 by 1/2 in. long self-drilling, self-tapping steel screws.

6. **Spray-Applied Fire Resistive Materials*** — Applied by spraying with water to the final thicknesses shown below. Areas between the underside of the roof units and the beam (or joist) shall be filled with material. Beam surfaces must be clean and free of dirt, loose scale and oil. Min average density of 14.5 pcf with min. ind density of 12.5 pcf for Types II, II HS, or DC/F. Min avg and min ind densities of 22 and 19 pcf, respectively, for Type HP. For method of density determination, refer to Design Information Section.

Min Thkns, In.

Rating Hr	Restrained Beam			Unrestrained Beam			Steel Roof Deck
	Beam W6x16	Joists > 4' OC	Joists ≤ 4' OC	Beam W6x16	Joists > 4' OC	Joists ≤ 4' OC	
1	7/16	7/8	3/4	7/16	7/8	3/4	1/2
1-1/2	3/4	1-3/8	1-3/16	3/4	1-3/8	1-3/16	13/16
2	1-1/8	1-7/8	1-5/8	1-1/8	1-7/8	1-5/8	1-3/16
3	1-13/16	2-7/8	2-9/16	1-13/16	2-7/8	2-9/16	1-3/16
4	2-1/2	—	—	2-1/2	—	—	2-1/4

ISOLATEK INTERNATIONAL — Type DC/F, II, II HS, HP. Investigated for exterior use. Type EBS or Type X adhesive/surface sealer optional.

7. **Metal Lath** — (Optional — Not Shown) — Diamond mesh, 3/8 in. expanded steel lath, 1.7 to 3.4 lb per sq yd. Lath secured to one side of each steel joist with No. 18 SWG galv steel wire at joist web and bottom chord members, spaced 15 in. OC max. When used, the metal lath is to be fully covered with no minimum thickness requirements.

8. **Glass Fiber Mesh** — (Optional — Not Shown) — As an alternate to metal lath (Item 7), min 3/32 in. sq mesh, coated fiberglass scrim fabric, weighing a min of 1.9 oz per sq yd or polypropylene fabric mesh, weighing approximately 1.25 oz per sq yd or equivalent may be used to facilitate spray application. The mesh shall be attached to one side of each joist web member. The method of attachment must be sufficient to hold the mesh and fire protection material during application and curing of the material. Suitable methods of attachment include hairpins, 18 SWG galv steel tie wire or hot melted glue. Hairpin clips are nom 1-1/4 in. long by 1/2 in. wide made of 0.064 in. diam steel wire. Hairpin clips or tie wire located near top and bottom and at intermediate points along each web member to firmly secure the fabric to the joist.

*** Indicates such products shall bear the UL or cUL Certification Mark for jurisdictions employing the UL or cUL Certification (such as Canada), respectively.**

Last Updated on 2018-05-03

The appearance of a company's name or product in this database does not in itself assure that products so identified have been manufactured under UL's Follow-Up Service. Only those products bearing the UL Mark should be considered to be Certified and covered under UL's Follow-Up Service. Always look for the Mark on the product.

UL permits the reproduction of the material contained in the Online Certification Directory subject to the following conditions: 1. The Guide Information, Assemblies, Constructions, Designs, Systems, and/or Certifications (files) must be presented in their entirety and in a non-misleading manner, without any manipulation of the data (or drawings). 2. The statement "Reprinted from the Online Certifications Directory with permission from UL" must appear adjacent to the extracted material. In addition, the reprinted material must include a copyright notice in the following format: "© 2019 UL LLC"